



### IMPORT UDS APPLIANCES TO OVIRT-RHEV

UDS Enterprise components are provided as Virtual Appliance. In order to upload these elements to the Microsoft Hyper-V platform we will use this tool: [engine-image-uploader](#).

#### Steps:

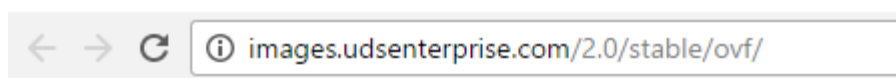
1. - Download UDS Appliances and host them in oVirt- engine or RHEV- engine VM (at least 670 MB free space is required).

Download UDS Appliance **UDS-Server-x.x.ovf**

<https://www.udsenderprise.com/en/accounts/login?next=/en/my-uds/>

Component	Format	Version
UDS Enterprise Appliances compatible with Citrix XenServer & VMware vSphere	OVA	2.0
UDS Enterprise Appliances compatible with Microsoft Hyper-V	VHDX	2.0
UDS Enterprise Appliances compatible with Acropolis, OpenNebula, OpenStack & oVirt	RAW	2.0
UDS Enterprise Appliances compatible with oVirt & RHEV	OVF	2.0

This will direct you to a download manager where the appliances to be downloaded are found.



### Index of /2.0/stable/ovf

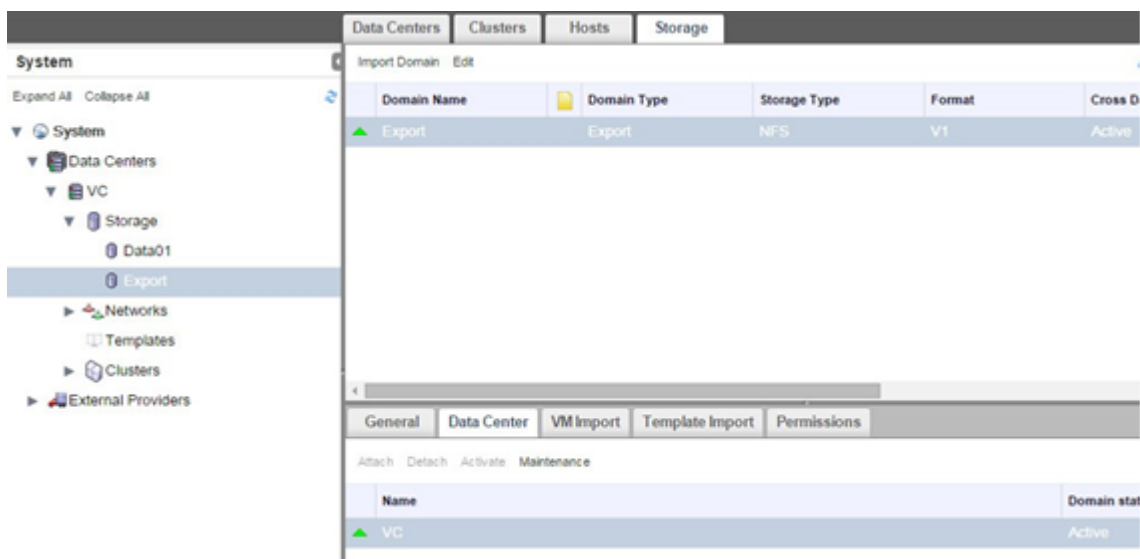
<a href="#">Name</a>	<a href="#">Last modified</a>	<a href="#">Size</a>	<a href="#">Description</a>
<a href="#">Parent Directory</a>		-	
<a href="#">Mysql.ovf</a>	2016-10-11 03:09	495M	
<a href="#">UDS-Server-2.0.ovf</a>	2016-09-16 06:55	692M	
<a href="#">UDS-Tuneler-2.0.ovf</a>	2016-09-23 10:56	640M	

Apache/2.4.10 (Debian) Server at images.udsenderprise.com Port 80



Nombre	Tipo	Tamaño
MySQL.ovf	Open Virtualization Format Package	708.464 KB
UDS-Server-2.0.ovf	Open Virtualization Format Package	708.464 KB
UDS-Tuneler-2.0.ovf	Open Virtualization Format Package	655.077 KB

2. - Have a "Storage Domain" type "Export" in your environment oVirt or RHEV with sufficient space to store the UDS Server machine.



### 3. - Import UDS Server to oVirt-RHEV

Once we have the UDS Virtual Appliance on the oVirt-engine or RHEV-Manager machine with a valid "Export Domain" type in the oVirt or RHEV environment, we import the server using the engine-image- Uploader in the following format:

```
engine-image-uploader -e Name_Domain_Export upload UDS-Server.ovf
```

```
File Edit View Search Terminal Help
[root@demowserver2012 userdemo]# engine-image-uploader -e Export upload UDS-Server.ovf
Please provide the REST API password for the admin@internal oVirt Engine user (CTRL+D to abort):
```



Indicate the password of the admin user for the oVirt or RHEV environment and wait for the import to finish.

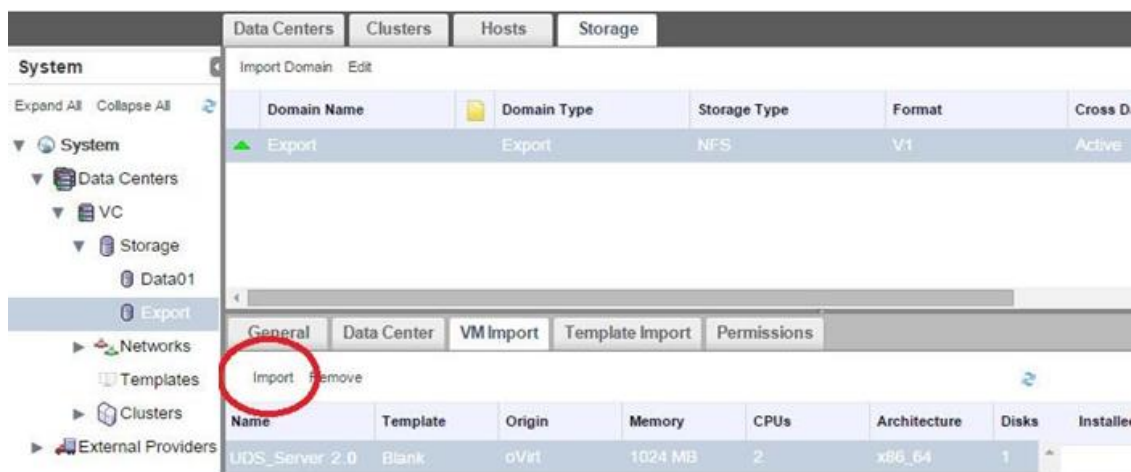
```
root@VCUDSoVirt7:/tmp
File Edit View Search Terminal Help
[root@VCUDSoVirt7 tmp]# engine-image-uploader -e Export upload UDS-Server.ovf
Please provide the REST API password for the admin@internal oVirt Engine user (CTRL+D to
abort):
[root@VCUDSoVirt7 tmp]#
```

Once the import is finished, from the administration of oVirt or RHEV you can see that the UDS server is ready to perform its deployment.



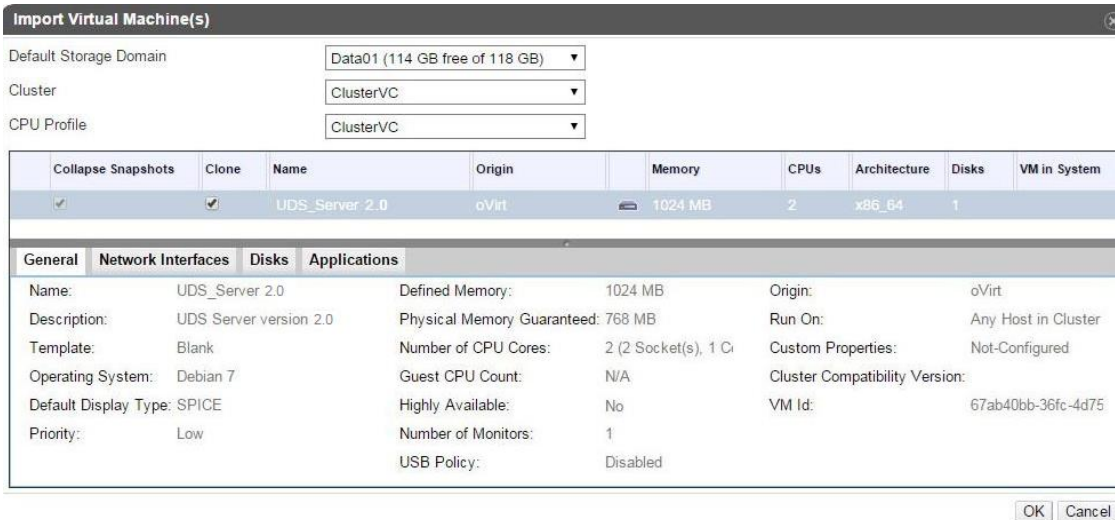
#### 4. – Deployment of UDS Server

To deploy the UDS server you should be placed in the "Storage Domain Export", select the "VM Import" tab, mark the UDS server and use the "Import" option.

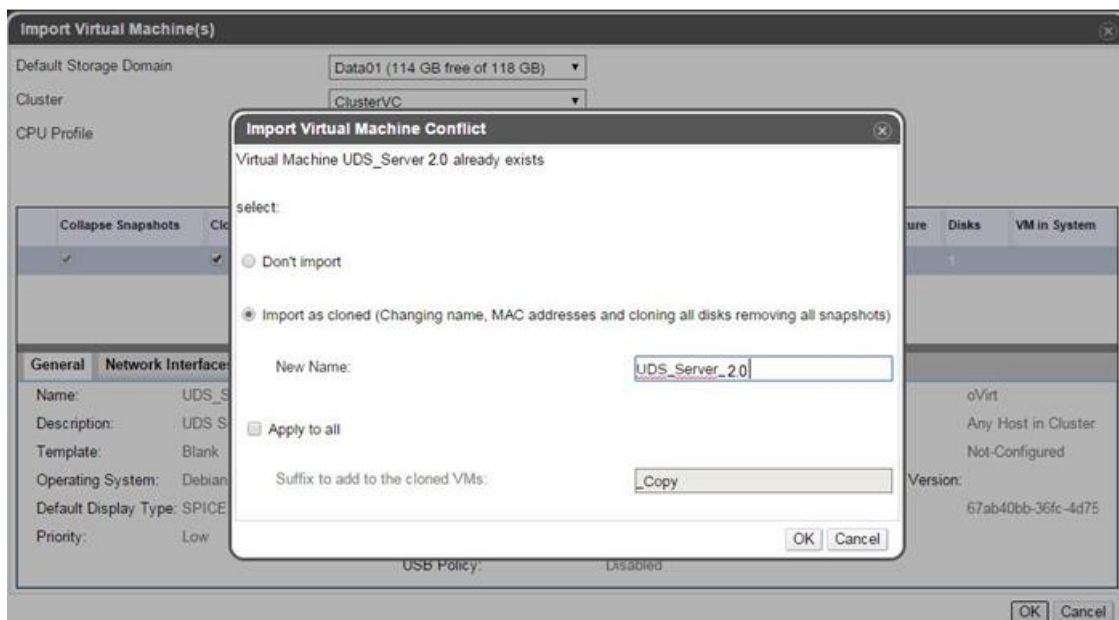




Select the storage and the cluster where to host the server. **“Check Clone”** to clone the server and keep a copy of the UDS Appliance in case you need to do more deployments. Then click **“Ok”**.



Specify a new name for the UDS server and accept (the new name should not contain any space):

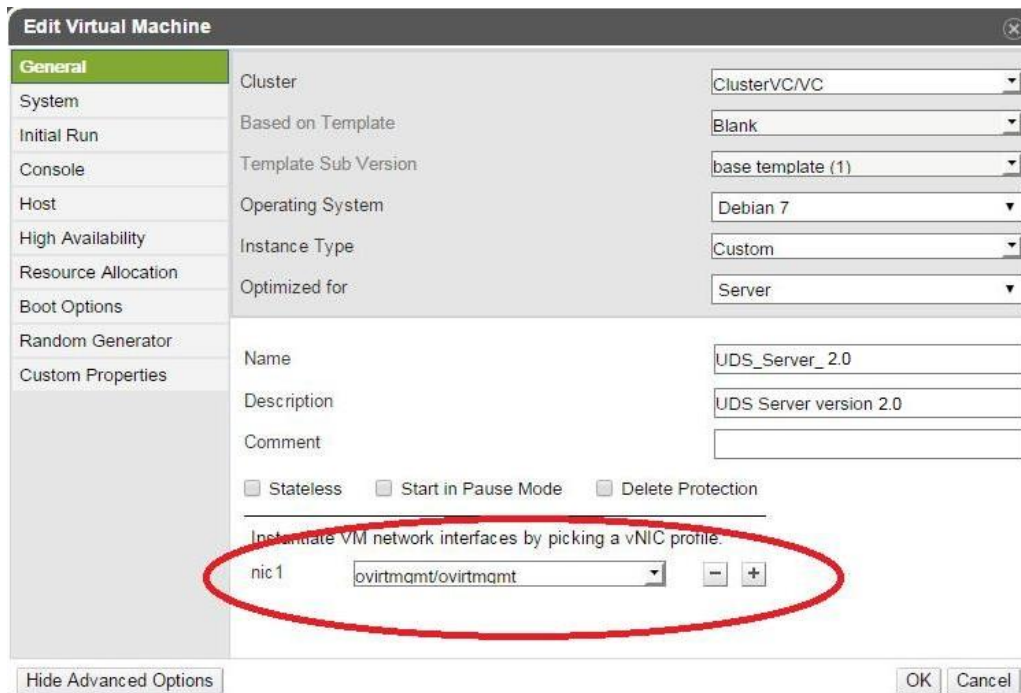


Wait for the cloning process to take place. Once the task is finished, you will have the UDS server as a virtual machine on the oVirt or RHEV platform.



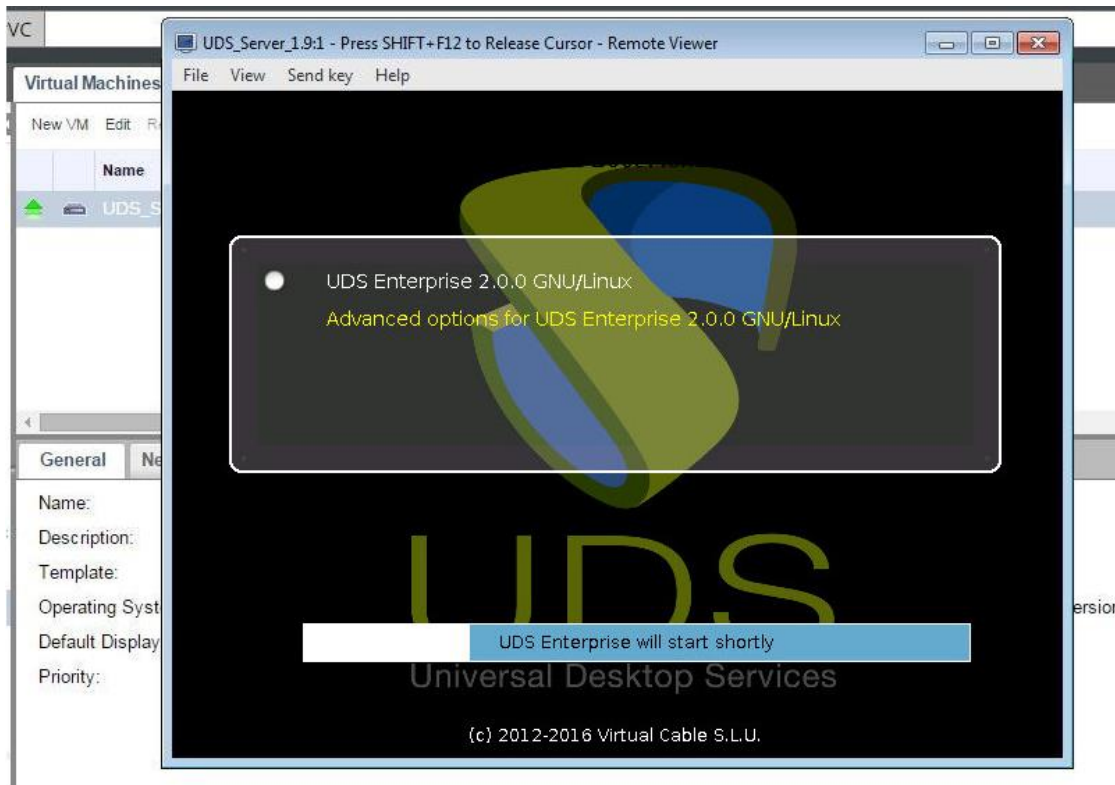
### 5. - Start UDS Server

Before you start UDS Server, you must manually assign a network interface. For this task it is necessary to edit the server and add a new network interface.





Once the network interface is assigned, accept and start the server to proceed with its configuration (see [UDS Enterprise Installation, Administration and User Manual](#)).



### NOTES:

1. If you want to use the UDS Tuneler component (which will give you access from WAN and HTML5 access to desktops / applications) repeat the same tasks described above using the file UDS-Tuneler.x.x.zip
2. If you do not have your own database server to host the UDS Enterprise database (remember that UDS Enterprise Free Edition & UDS Enterprise Evaluation Version do not require an external database), from the same link you can download a virtual machine with a database server already prepared for that purpose. We remind you that this server is not part of UDS Enterprise, and, therefore, is not included in the support





# UDS Enterprise

## How to import UDS Appliances to 0Virt-RHEV

[www.udsenderprise.com](http://www.udsenderprise.com)

### Support and professional services

VirtualCable markets UDS Enterprise through a subscription model, including support and updates, depending on the number of users.

In addition, VirtualCable offers professional services to install and configure UDS Enterprise and other virtualization technologies.

For more information, please visit [www.udsenderprise.com](http://www.udsenderprise.com) or send us an E-mail to [info@udsenderprise.com](mailto:info@udsenderprise.com)