



IMPORT UDS APPLIANCES TO OPENSTACK

UDS Enterprise components are provided as Virtual Appliances. In order to upload these elements to the OpenStack platform we will perform the following tasks:

Access your account in:

<https://www.udsenderprise.com/en/accounts/login?next=/en/my-uds/>

Once inside, click on UDS Enterprise Appliances compatible with OpenStack in **My Downloads**

My Downloads

Component
UDS Enterprise Appliances compatible with Citrix XenServer & VMware vSphere
UDS Enterprise Appliances compatible with Microsoft Hyper-V
UDS Enterprise Appliances compatible with Acropolis, OpenNebula, OpenStack & oVirt
UDS Enterprise Appliances compatible with oVirt & RHEV

This will redirect us to a download manager where the appliances to be downloaded are located.

← → ↻

Index of /2.0/stable/raw

<u>Name</u>	<u>Last modified</u>	<u>Size</u>	<u>Description</u>
Parent Directory		-	
Mysql.zip	2016-10-11 03:16	495M	
UDS-Server-2.0.zip	2016-09-16 06:57	692M	
UDS-Tuneler-2.0.zip	2016-09-23 11:00	640M	

Apache/2.4.10 (Debian) Server at images.udsenderprise.com Port 80

Download and unzip the archives, in this case we will expose the example of the file UDS-Server-x.x.zip

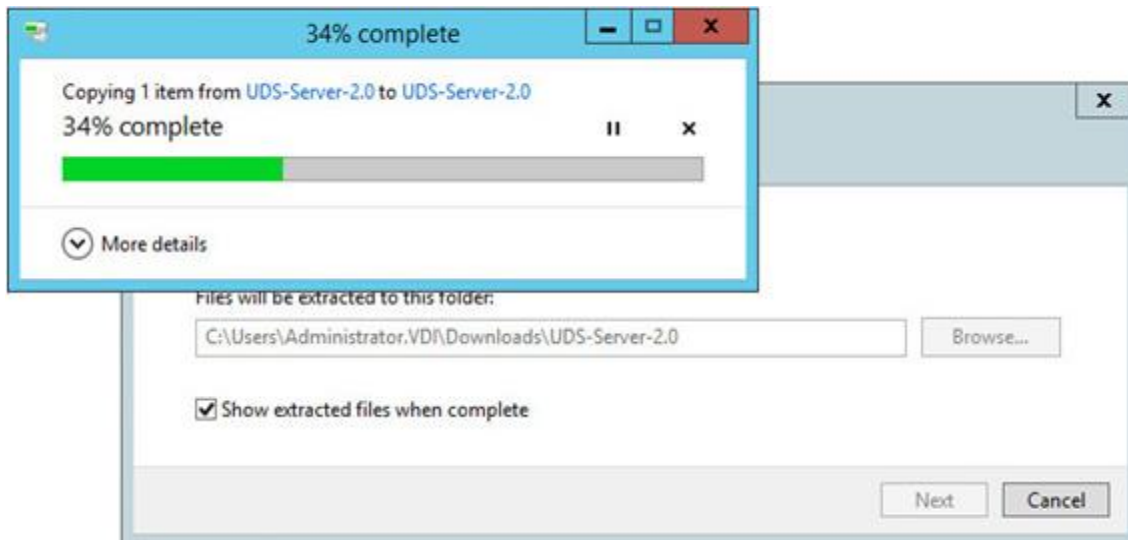
Nombre	Tipo	Tamaño
Mysql.zip	Archivo WinRAR ZIP	506.842 KB
UDS-Server-2.0.zip	Archivo WinRAR ZIP	708.465 KB
UDS-Tuneler-2.0.zip	Archivo WinRAR ZIP	655.079 KB



UDS Enterprise

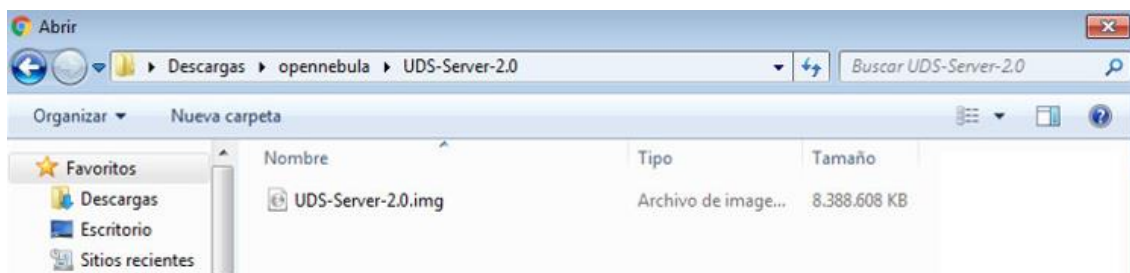
How to Import UDS Appliances to OpenStack

www.udsenderprise.com



Nombre	Tipo	Tamaño
Mysql	Carpeta de archivos	
UDS-Server-2.0	Carpeta de archivos	
UDS-Tuneler-2.0	Carpeta de archivos	
Mysql.zip	Archivo WinRAR ZIP	506.842 KB
UDS-Server-2.0.zip	Archivo WinRAR ZIP	708.465 KB
UDS-Tuneler-2.0.zip	Archivo WinRAR ZIP	655.079 KB

After unzipping, we get archives with the extension .img that we will import to the platform OpenStack.



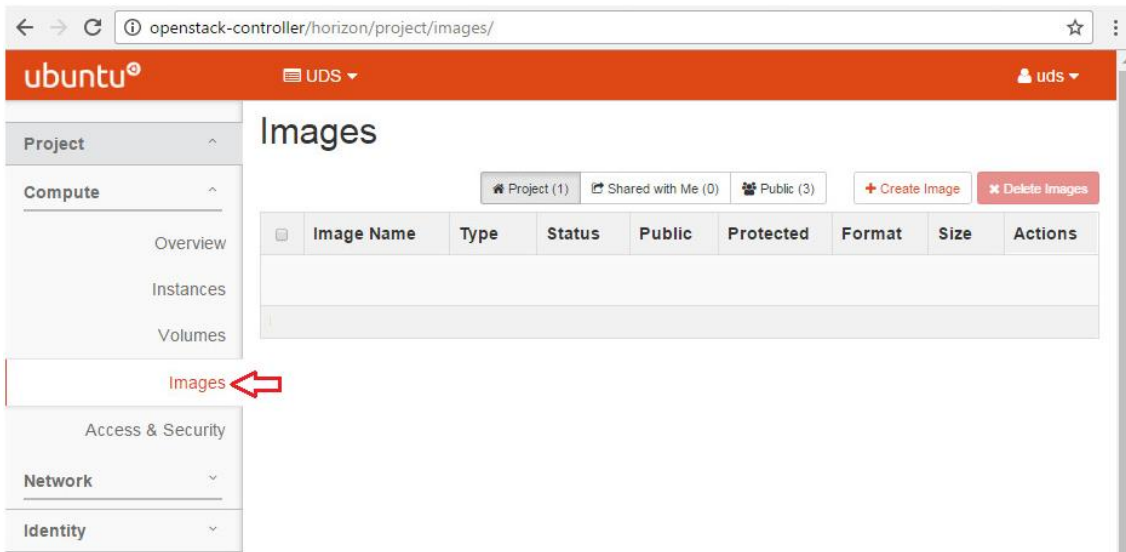
Accessing our OpenStack environment, the user account to be used should be granted administration rights, click on **“images”**.



UDS Enterprise

How to Import UDS Appliances to OpenStack

www.udsenderprise.com



The wizard will prompt for the **name** of the new image, in this case select **Image File**, locate and choose the file (UDS-Server-2.0.img), the Format (in this case the format Type should be **RAW**), the minimum disk size and the minimum memory you want to use. After, Click on **Create Image**.

Create An Image

Name *

Description

Image Source

Image File
 UDS-Server-2.0.img

Format *

Architecture

Minimum Disk (GB)

Minimum RAM (MB)

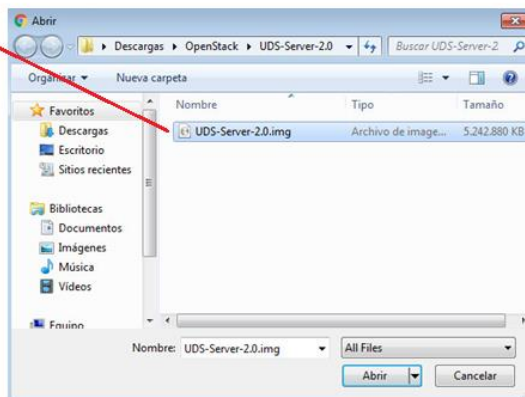
Public

Protected

Description:

Currently only images available via an HTTP URL are supported. The image location must be accessible to the Image Service. Compressed image binaries are supported (.zip and .tar.gz.)

Please note: The Image Location field MUST be a valid and direct URL to the image binary. URLs that redirect or serve error pages will result in unusable images.



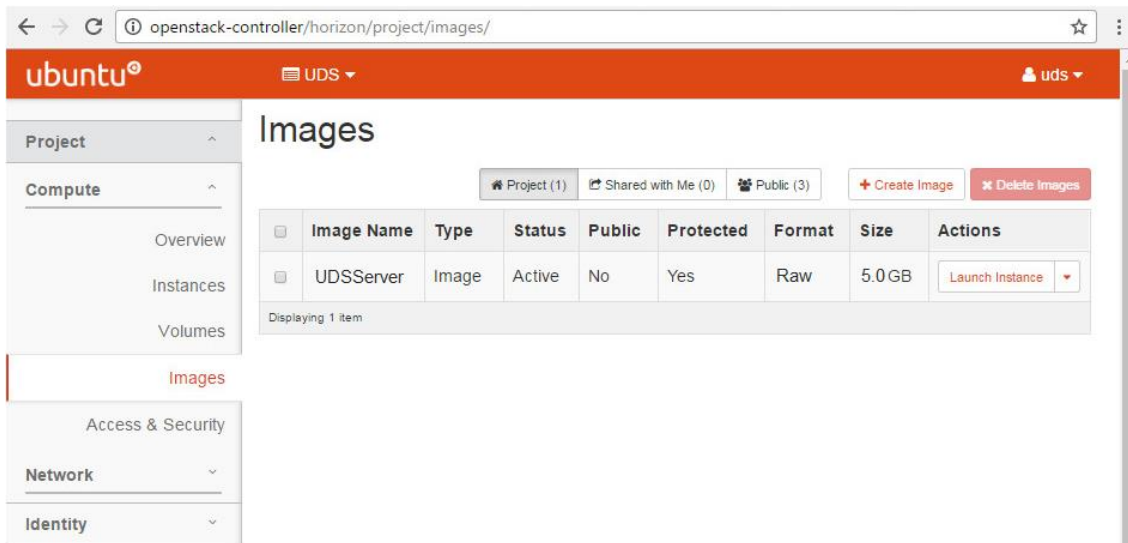
Upon the creation of the image, we will need to execute an instance by clicking on Launch Instance.



UDS Enterprise

How to Import UDS Appliances to OpenStack

www.udsenderprise.com



We should keep in mind these minimal requirements of memory and VCPU that should be met for each of the VMs.

MV	Memoria (MB)	VCPU
MySQL	1024	1
Server	1024	2
Tunneler	1024	2

When clicking on **Launch Instance**, a series of tabs to configure will appear. In **Details** tab we should provide the **availability zone**, the **name of the instance**, the **flavor** (this defines the calculation capacity of memory and storage capacity in a virtual machine). This can generate a flavor according to the requirements of **UDS** or choose one that suits the resources that you want to assign to your servers, in this case we will use the flavor **m1.medium**, we consider that it meets the minimum requirements for the Install of UDSServer.

Name	m1.medium
VCPUs	2
Root Disk	40 GB
Ephemeral Disk	0 GB
Total Disk	40 GB
RAM	4,096 MB

Project Limits	
Number of Instances	2 of 40 Used
Number of VCPUs	2 of 20 Used
Total RAM	2,176 of 51,200 MB Used

It will also prompt for the **number of instances** and the **boot image**, in this case we choose the image that we have already created (**UDSServer**), and select the network to which the VM will connect. Click on **Launch**



UDS Enterprise

How to Import UDS Appliances to OpenStack

www.udsenderprise.com

Launch Instance

Details* Access & Security Networking* Post-Creation

Advanced Options

Availability Zone: nova

Instance Name*: UDSServer

Flavor*: m1.medium

Instance Count*: 1

Instance Boot Source*: Boot from image

Image Name*: UDSServer (5.0 GB)

Flavor Details:

Name	m1.medium
VCPUs	2
Root Disk	40 GB
Ephemeral Disk	0 GB
Total Disk	40 GB
RAM	4,096 MB

Project Limits:

Number of Instances	2 of 40 Used
Number of VCPUs	2 of 20 Used
Total RAM	2,176 of 51,200 MB Used

Selected networks: NIC: LAN

Available networks: ext-net, uds-private

Cancel Launch

By executing the instance, the VM UDSServer will be created and by clicking on **Instances** we can see the process.

Instances

Instance Name	Image Name	IP Address	Size	Key Pair	Status	Availability Zone	Task	Power State	Time since created	Actions
UDS	UDSServer		m1.small	-	Build	nova	Spawning	No State	0 minutes	Associate Floating IP

Displaying 1 items

After the VM is created, click on it.

Instances

Instance Name	Image Name	IP Address	Size	Key Pair	Status	Availability Zone	Task	Power State	Time since created	Actions
UDS	UDSServer	172.16.0.11	m1.small	-	Active	nova	None	Running	2 days, 3 hours	Create Snapshot

Displaying 1 items

We can observe the general description of the instance, **specifications**, and/or **requirements**, **IP address**, **security groups**, **metadata** and **volumes**.



Instance Details: UDS

↓

Overview Log Console Action Log

Instance Overview

Information

Name	UDS
ID	b144e863-d77c-4bdd-8204-8ff2f324389
Status	Active
Availability Zone	nova
Created	Dec. 13, 2016, 4:17 p.m.
Time Since Created	2 days, 3 hours

Specs

Flavor	m1.small
Flavor ID	2
RAM	2GB
VCPUs	1 VCPU
Disk	20GB

IP Addresses

Lan	172.16.0.11
------------	-------------

Security Groups

default	ALLOW IPv4 from default ALLOW IPv4 to 0.0.0.0/0 ALLOW IPv6 to :::0 ALLOW IPv6 from default
----------------	---

Metadata

Key Name	None
Image Name	UDS Server

Volumes Attached

Volume	No volumes attached.
---------------	----------------------

Access the VM and do a click on the console tab to start the configuration of the UDS VM. We recommend that you follow the steps in the [manual of installation and administration of UDS Enterprise 2.0](#).



UDS Enterprise

How to Import UDS Appliances to OpenStack

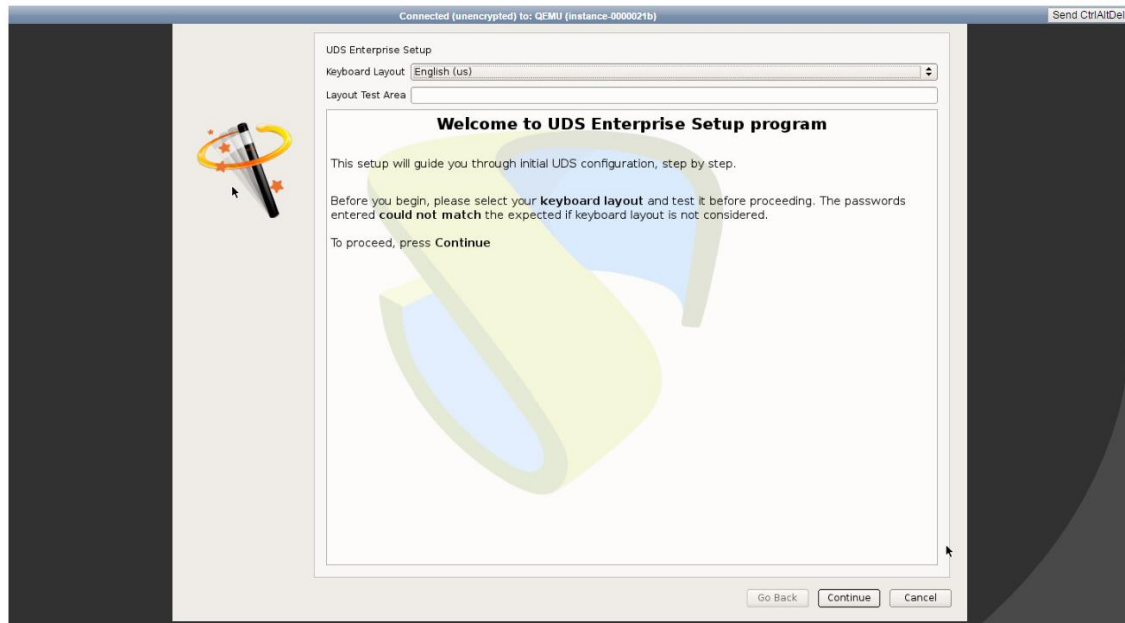
www.udsenderprise.com

Instance Details: UDS

Overview Log Console Action Log Create Snapshot

Instance Console

If console is not responding to keyboard input: click the grey status bar below. [Click here to show only console](#)
To exit the fullscreen mode, click the browser's back button.



NOTES:

1. If you want to use the UDS Tuner component (which will give you access from WAN and HTML5 access to desktops / applications) repeat the same tasks described above using the file UDS-Tuneler.img
2. If you do not have your own database server to host the UDS Enterprise database (remember that UDS Enterprise Free Edition & UDS Enterprise Evaluation Version do not require an external database), from the same link you can download A virtual machine with a database server already prepared for that purpose. We remind you that this server is not part of UDS Enterprise, and, therefore, is not included in the support.



UDS Enterprise

How to Import UDS Appliances to OpenStack

www.udsenderprise.com

Support and professional services

UDS Enterprise Virtual Cable markets through a subscription model, including support and updates, depending on the number of users.

In addition, Virtual Cable offers professional services to install and configure UDS Enterprise and other virtualization technologies.

For more details, visit www.udsenderprise.com or send us an email to info@udsenderprise.com