



IMPORT UDS APPLIANCES TO MICROSOFT HYPER-V

UDS Enterprise components are provided as Virtual Appliance. In order to upload these elements to the Microsoft Hyper-V platform we will perform the following tasks:

Access your account in:

<https://www.udsenderprise.com/en/accounts/login?next=/en/my-uds/>

Once inside the download page, click on “**UDS Enterprise Appliances compatibles with Microsoft Hyper-V**” in **Other Appliances**

Other Appliances

- UDS Enterprise Appliances compatible with Nutanix Acropolis, OpenStack, OpenNebula...
- UDS Enterprise Appliances compatible with oVirt-RHEV
- UDS Enterprise Appliances compatible with Microsoft Hyper-V**

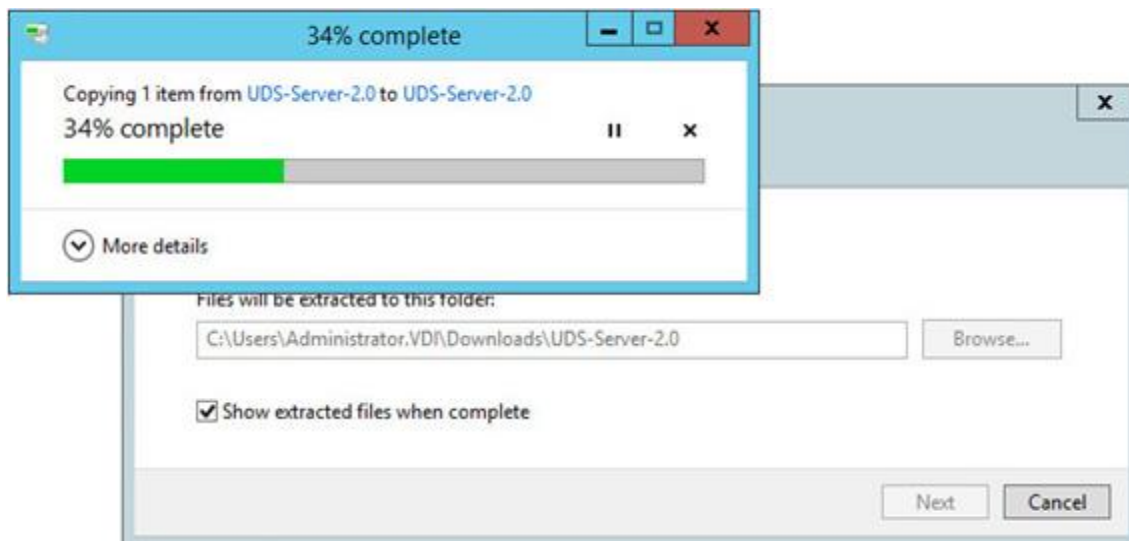
This will direct you to a download manager where the appliances to be downloaded are found.

<u>Name</u>	<u>Last modified</u>	<u>Size</u>	<u>Description</u>
Parent Directory		-	
Mysql.zip	2016-10-11 03:42	495M	
UDS-Server-2.0.zip	2016-09-16 07:00	692M	
UDS-Tuneler-2.0.zip	2016-09-23 11:05	640M	



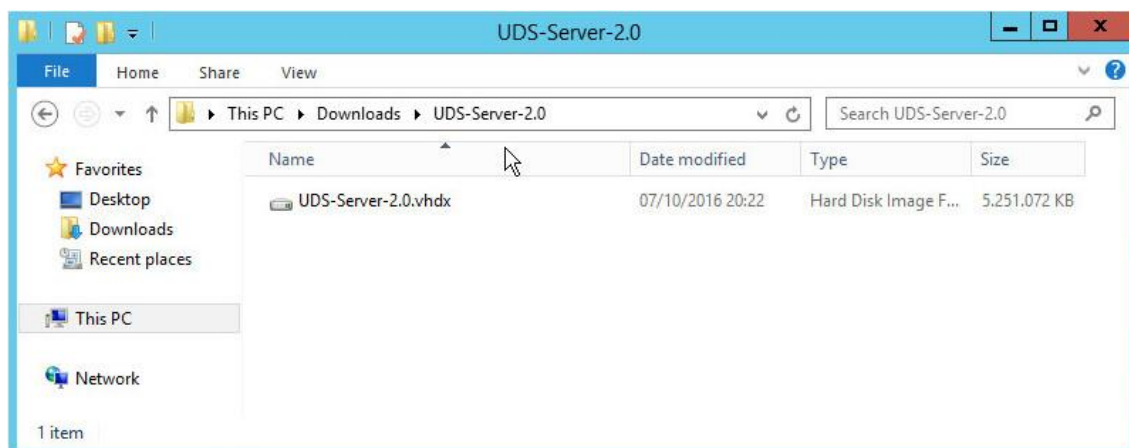
Download and uncompress the archives. In this case, we will expose an example of the file **UDS-Server-x.x.zip**

Nombre	Tipo	Tamaño
Mysql.zip	Archivo WinRAR Z...	655.124 KB
UDS-Server-2.0.zip	Archivo WinRAR Z...	708.457 KB
UDS-Tuneler-2.0.zip	Archivo WinRAR Z...	655.124 KB



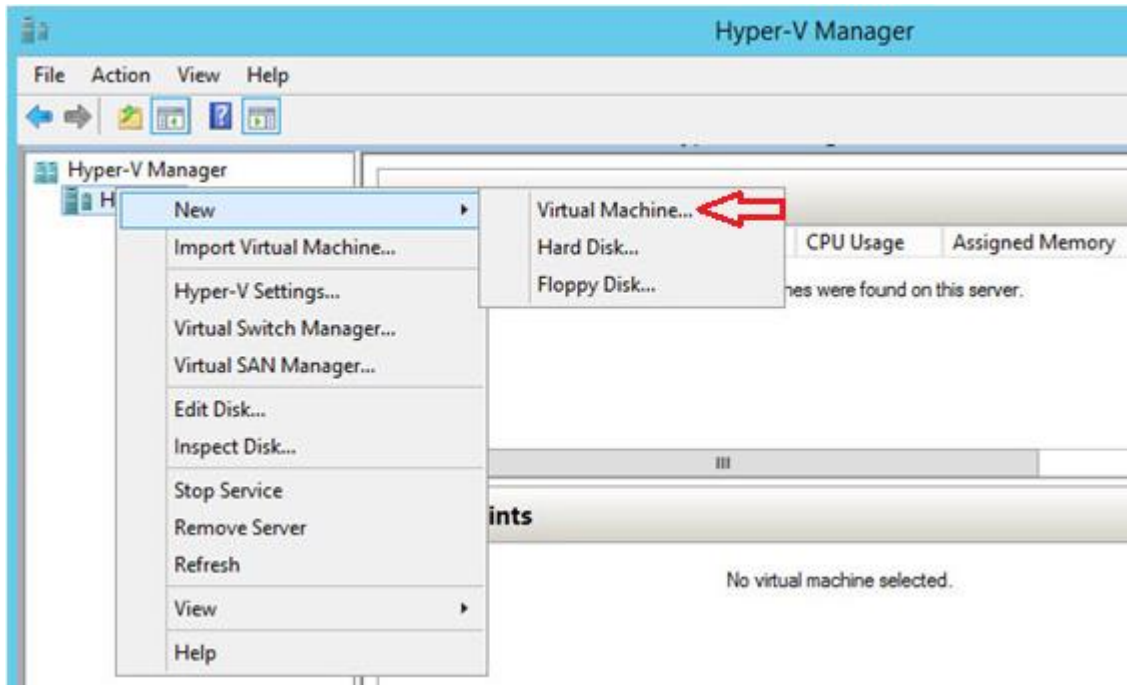
Nombre	Tipo	Tamaño
Mysql	Carpeta de archivos	
UDS-Server-2.0	Carpeta de archivos	
UDS-Tuneler-2.0	Carpeta de archivos	
Mysql.zip	Archivo WinRAR Z...	655.124 KB
UDS-Server-2.0.zip	Archivo WinRAR Z...	708.457 KB
UDS-Tuneler-2.0.zip	Archivo WinRAR Z...	655.124 KB

After decompressing the .zip, you get a **“.vhdx”** file, which you will need to import into the Hyper-V platform.

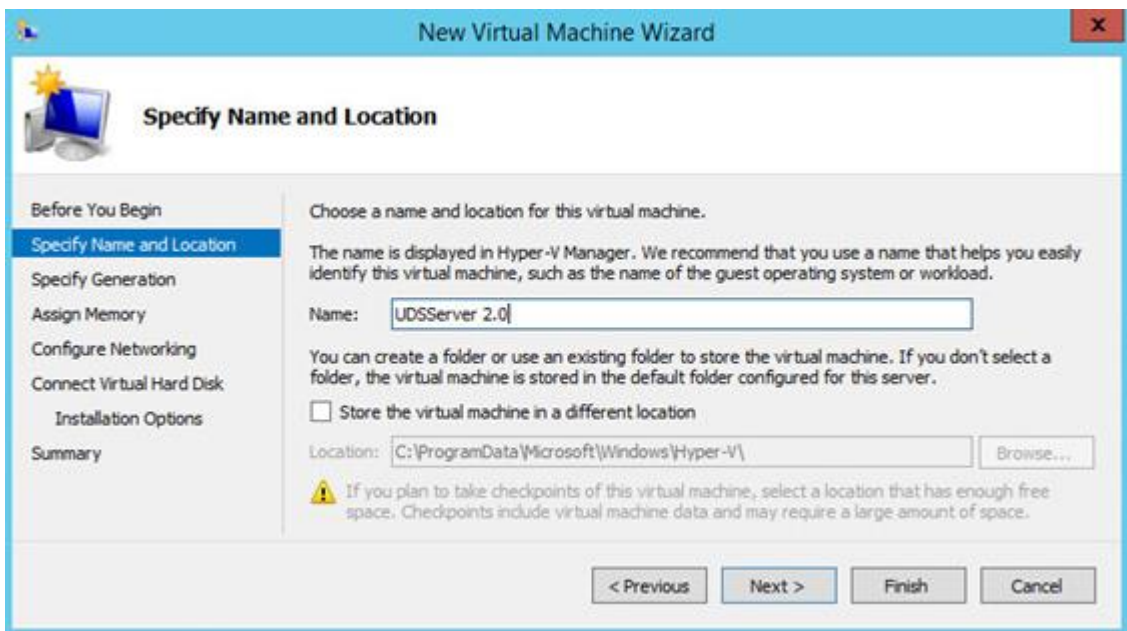




Start Hyper-V and create a virtual machine:

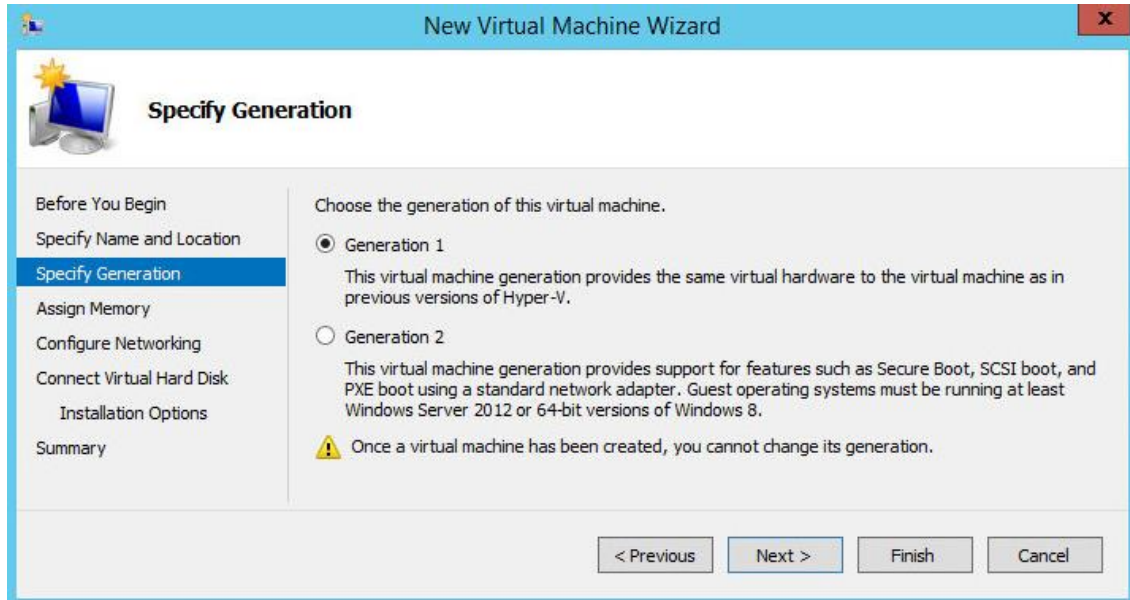


Setup a name for the VM:





In this case we choose Generation 1:



Assign the amount of memory that the VM would need in **MB: 1024**

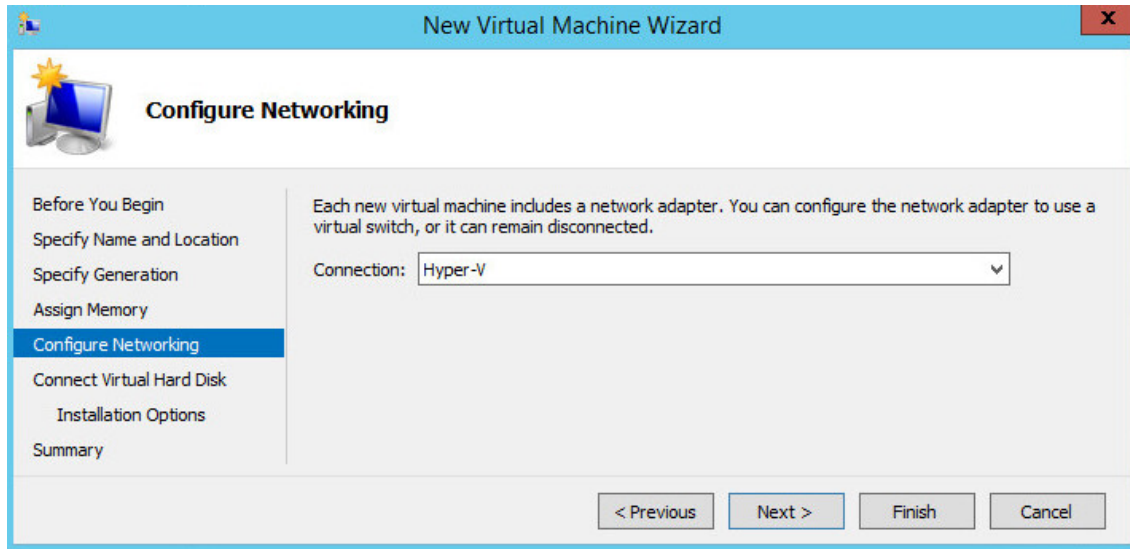
Resources that other server will need are:

MV	Memoria (MB)	CPU
MySQL	1024	1
Server	1024	2
Tunneler	1024	2

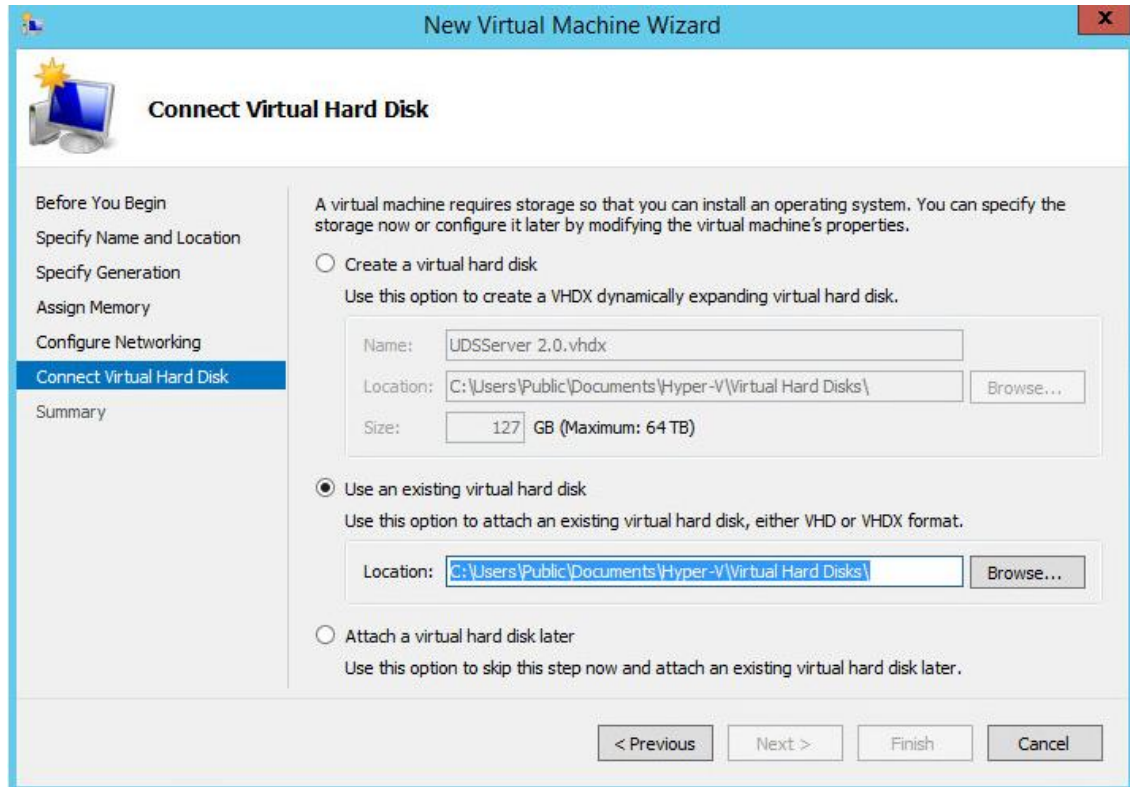


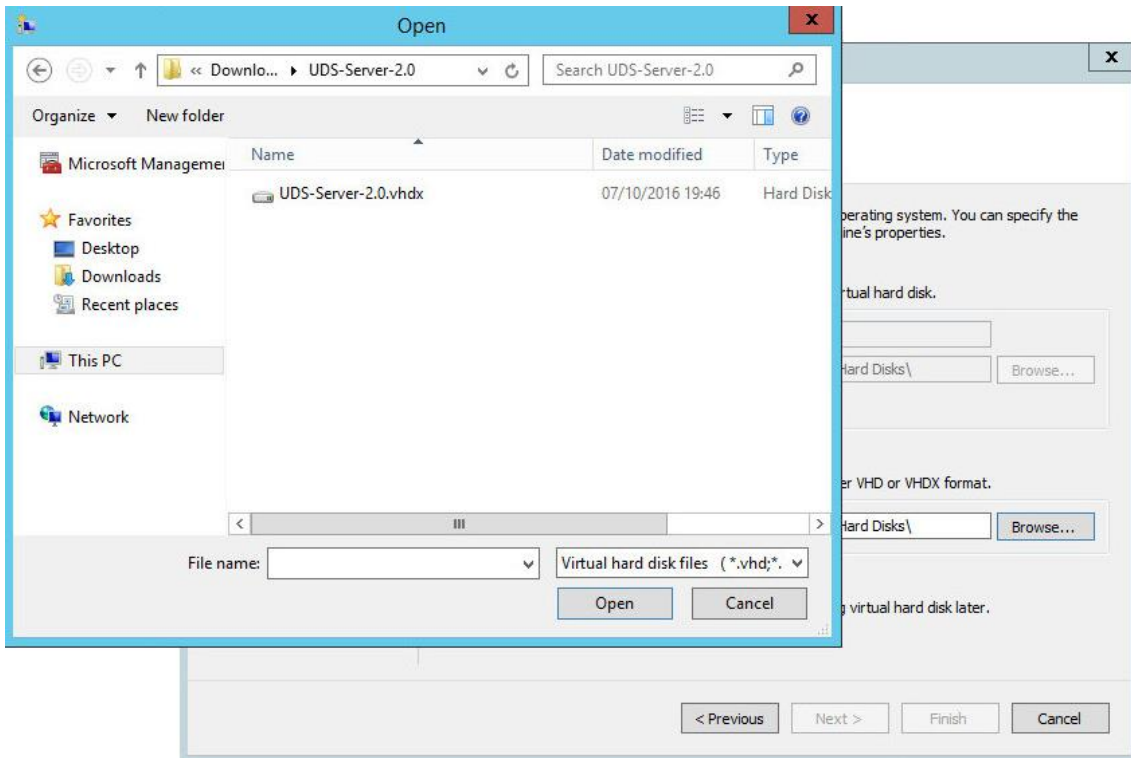


Each new virtual machine includes a network adapter. Select the appropriate network where the UDS Server VM will be connected to.

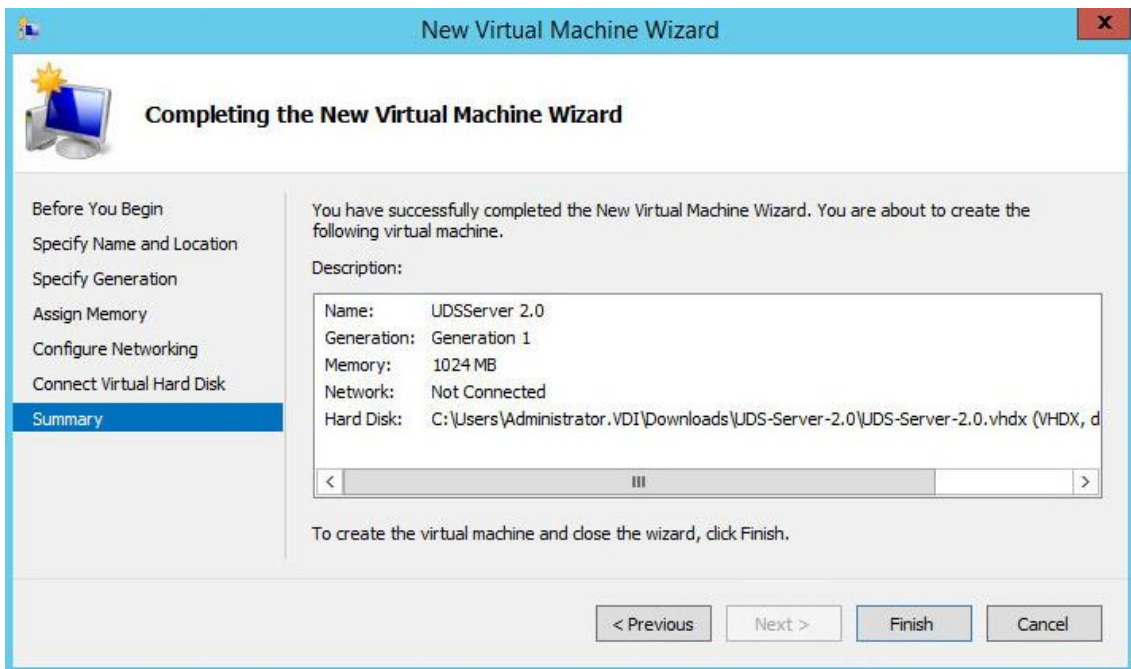


In the following case, we provide the path of the folder containing the UDS Server disk (.vhdx file):





Check that all the data is correct and finish the import wizard:



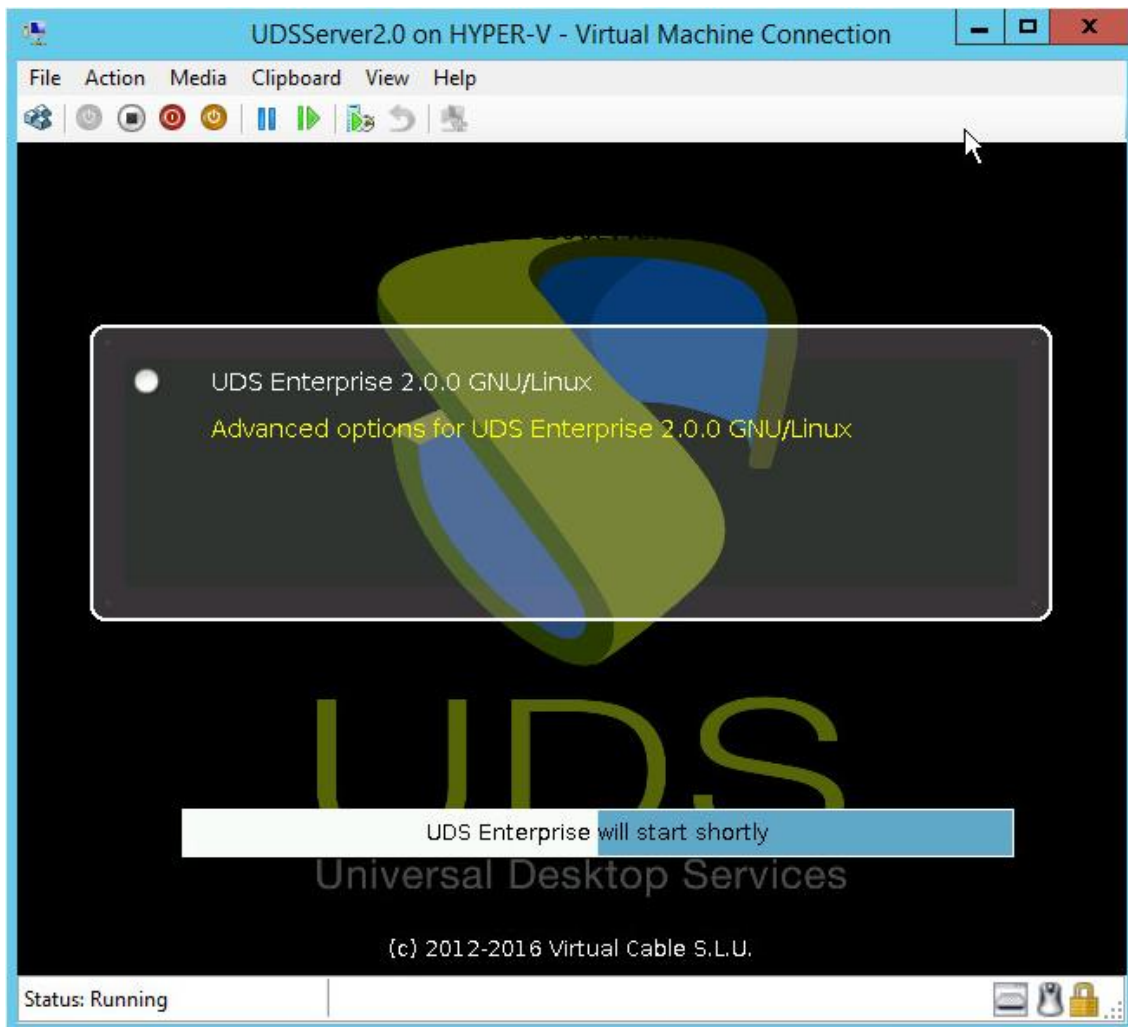


UDS Enterprise

How to import UDS Appliances to Microsoft Hyper-V

www.udsenderprise.com

Accept and start the server to proceed with its configuration (see [UDS Enterprise Installation, Administration and User Manual](#)).



NOTES:

1. If you want to use the UDS Tuner component (which will give you access from WAN and HTML5 access to desktops / applications) repeat the same tasks described above using the file UDS-Tuneler.x.x.zip
2. If you do not have your own database server to host the UDS Enterprise database (remember that UDS Enterprise Free Edition & UDS Enterprise Evaluation Version do not require an external database), from the same link you can download a virtual machine with a database server already prepared for that purpose. We remind you that this server is not part of UDS Enterprise, and, therefore, is not included in the support



UDS Enterprise

How to import UDS Appliances to Microsoft Hyper-V

www.udsenderprise.com

Support and professional services

VirtualCable markets UDS Enterprise through a subscription model, including support and updates, depending on the number of users.

In addition, VirtualCable offers professional services to install and configure UDS Enterprise and other virtualization technologies.

For more information, please visit www.udsenderprise.com or send us an E-mail to info@udsenderprise.com